



HOTEL & TRAVEL

Discounted rates are available at the hotels listed below for your stay during the show.

To receive the special show rate mention the Progressive® Insurance New York Boat Show® or National Marine Manufacturer's Association when you call to book your room.

Be sure to book early, hotels can/do sell out quickly.

New York Marriott Marquis

1535 Broadway New York, NY 10036

Dates: January 17-28
Cutoff Date: January 2
Single/Double: \$229

Reservations via phone: (800)228-9290
reference NY Boat Show

[Marriott Marquis On-Line Reservations](#)

Four Points Sheraton Midtown Manhattan

377 West 39th Street, New York, NY 10018

Dates: January 17-28
Cutoff Date: January 3
Single \$169
Double \$189

Reservations via phone: 646-952-5980 (group code NY Boat Show NMMA)

[Four Points Sheraton Midtown On-Line Reservations](#)

Holiday Inn Times Square

585 8th Avenue New York, NY 10018

Dates: January 17-28
Cutoff Date: January 3
Single/Double: \$139.00
Triple/Quad: \$149-\$159

Reservations via phone: (212) 473-6200 (group code NMMA)

[Holiday Inn Times Square On-line Reservations](#)

Sheraton Lincoln Harbor Hotel

500 Harbor Blvd., Weehawken, NJ 07086

Dates: January 17-28
Cutoff Date: January 3
Single/Double: \$119

Each additional guest would be \$20 additional charge per room night triple/quad.

Rates include the following:
Complimentary parking & wifi

Reservations via phone: 800.325.3535 (group NY Boat Show)

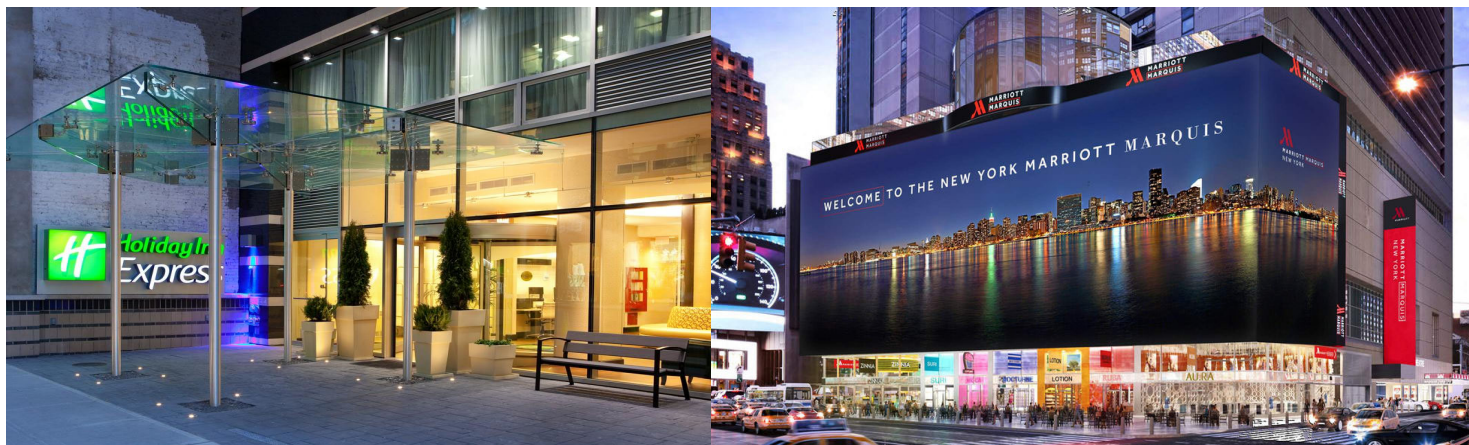
[Sheraton Lincoln Harbor On-Line Reservations](#)

HOTEL & TRAVEL

Hotel Reservations

Directions &
Parking

Public
Transportation





HOTEL & TRAVEL

Hotel Reservations

Directions &
Parking

Public
Transportation

DIRECTIONS & PARKING

Jacob K. Javits Convention Center
655 W. 34th St, New York, NY 10001

DIRECTIONS

From the North (Westchester, Connecticut, Massachusetts)

95 South (via the Cross-Bronx Expressway) to the George Washington Bridge. At approach to bridge, bear right to lower level. Exit at the last exit in New York–Parkway South–9A. Follow Parkway South (Henry Hudson Parkway/West Side Highway) to 42nd Street. Turn left. Go one block to 11th Avenue and turn right.

- Saw Mill River Parkway/Henry Hudson Parkway/Route 9A: Follow 9A South to 42nd Street. Turn Left. Go one block to 11th Avenue and turn right.
- New York State Thruway/Major Deegan Expressway/Route 87: Major Deegan Expressway to George Washington Bridge exit. Stay in right lane towards lower level. Exit at the last exit in New York–Parkway South–9A. Follow Parkway South (Henry Hudson Parkway/West Side Highway) to 42nd Street. Turn left. Go one block to 11th Avenue and turn right.
- **From the South (New Jersey, Delaware, Pennsylvania, etc.)**
95 North to the New Jersey Turnpike. Exit at the Lincoln Tunnel. When exiting the tunnel, bear left. Follow signs for uptown or northbound to 42nd Street. Turn left onto 42nd Street until you reach 11th Avenue and turn left.
- George Washington Bridge to Parkway South– 9A. At 42nd Street, turn left. Go one block to 11th Avenue and turn right.

From Queens and Long Island

Queens-Midtown Tunnel: Take Southbound or Downtown exit to 34th Street and turn right. Go west and turn right on 11th Avenue.

- Queensboro/59th Street Bridge: Take 60/61st Street Exit. Go to 5th Avenue alongside Central Park to 59th Street. Turn right onto 59th Street to 7th Avenue and turn left. Go two blocks to 57th Street and turn right. Follow 57th Street to 11th Avenue and turn left. The Center is between 34th and 38th streets.

From Staten Island

Verrazano-Narrows Bridge eastbound to the Gowanus Expressway, to the Brooklyn Battery Tunnel. Exit westbound to the West Side Highway/12th Avenue. At 34th Street, turn right. Go one block to 11th Avenue and take a left.

PARKING

- The average price for a lot close to the Javits Center is \$40-\$60, plus tax. Many lots add a \$5 -\$10 surcharge for SUVs and mini vans. Prices are based on a passenger car, 8-10 hours in the lot on a Saturday during a show at the Javits Center Rate Business.
- Central Parking has partnered to bring parking discounts to convention and trade show delegates. www.spplus.com



PUBLIC TRANSPORTATION

NYC TRANSIT

The following train stops at 34th Street/Hudson Yards:

11th Avenue Subway: **7**

The following trains stop at 34th Street/Penn Station:

[Amtrak](#)
[New Jersey Transit](#)
[The Long Island Rail Road](#)



HOTEL & TRAVEL

Hotel Reservations

Directions &
Parking

Public
Transportation

8th Avenue Subway: **A C E**
7th Avenue Subway: **1 2 3**
6th Avenue Subway: **B D F M N Q R**

Note - **B** does not run on weekends.
The following trains stop at 42nd Street/Times Square (Broadway):

8th Avenue: **A C E**
7th Avenue: **1 2 3 N Q R 7 S**
6th Avenue: **B D F M**

Note - **B** does not run on weekends.

The following trains stop at Grand Central Station at 42nd Street at Lexington

Lexington Avenue Subway: **4 5 6 7 S**

Metro North Railroad

For further information, call MTA Travel info: 718.330.1234 or visit www.mta.info/index.html.

